

---

Licensed by the New York State Education Department

---

# The LEARN Center

---

**HEAVY EQUIPMENT OPERATOR & SAFETY TRAINING SCHOOL**

---



Bulldozers



Payloaders



Excavators

Skid Steer  
Loaders



Backhoe  
Loaders



School Catalog – Volume 6

2018 - 2019

## Table of Contents

Introduction And General Information .....	2
Introduction And General Information ( <i>continued</i> ) .....	3
Faculty .....	4
Faculty ( <i>Continued</i> ) .....	5
Curriculums Offered .....	6
Entry-Level Curriculums .....	6
Entry-Level Entrance Requirements .....	6
Entry-Level General Description .....	7
Backhoe Loader Curriculum .....	8
Bulldozer Curriculum .....	12
Excavator Curriculum .....	16
Payloader Curriculum .....	20
Skid-Steer Curriculum .....	24

# Introduction And General Information



The LEARN Center is a heavy equipment operator and safety training school located in Suffolk County, NY on Long Island. The LEARN Center is the first and only licensed school for certifying heavy equipment operators in the State of New York. The LEARN Center address is 819 Fifteenth Street, Ronkonkoma, NY 11779, and emulates a construction environment in many ways.

On location there is a shop area that is an enclosed 3,200 SF heated building with a 20-foot ceiling and a 16-foot roll-up garage door with a concrete floor. The classroom area that is in the shop building is air conditioned, includes a kitchenette, media center, and bathroom facilities. The shop is used for instruction pertinent to the maintenance of the machines, as well as, for instruction pertaining to the components of the machines, checking and filling of fluids, greasing of the lubrication points and troubleshooting. The classroom area is used for the comprehensive courses, coffee breaks, and lunch. Also, on location is a yard for operating the heavy equipment and where the practical courses are taught.



The 1.25-acre yard area contains the shop that is fenced off and gated from the rest of the campus. There are approximately 20 pieces of heavy equipment, construction materials (conduit, drywells, stone blocks, etc....) and construction equipment (signage, slings, wire rope, etc....). On the outside of the fenced yard area is an administration building of approximately 900 SF and free parking for approximately 30 vehicles.

# Introduction And General Information (*continued*)

The LEARN Center is dedicated to teaching students the skills required to safely operate a variety of heavy equipment construction machines. At the present time, the approved New York State Education Department courses include skid-steers, backhoes, excavators, payloaders, and bulldozers. In addition, The LEARN Center staff also offers private lessons and training on a wide variety of subjects and equipment including, OSHA outreach training, New York City Department of Buildings Courses, blueprints, forklifts, cranes, and more. The school is continuing to expand to meet the rapidly growing need for qualified employees in this industry.

This is the 2018 – 2019 school catalog that describes the programs offered, entrance requirements, school rules and regulations, graduation requirements, as well as, the school faculty (their qualifications), tuition, refund policy and other topics of importance to the student.

The LEARN Center puts the safety of the students, personnel and the general public above all else. With that, The LEARN Center has tailored courses to instruct the students with various aspects of industry standards and regulations. All students are required to provide and wear work boots/shoes and should expect to train in an outdoor environment for more than 70% of the curriculum timeframe. Students are expected to converse and understand English. The school is not handicapped accessible. However, the school is open to teaching select physically challenged students. The LEARN Center will provide ANSI approved and OSHA required hard hats, safety vests and eye protection.

The student should be aware that some information in the catalog may change. It is recommended that when students consider enrollment, they check with the school director to determine if there is any change from the information provided in the catalog. In addition, this catalog will contain information on the school's teaching personnel and courses/curricula offered. Please be advised that the New York State Education Department separately licenses all teaching personnel and independently approves all courses and curricula offered. Therefore, it is possible that courses/curricula listed in the school's catalog may not be approved at the time that a student enrolls in the school or the teaching personnel listed in the catalog may have changed. It is again recommended that the student check with the school director to determine if there are any changes in the courses/curricula offered or the teaching personnel listed in the catalog.



# Faculty

The LEARN Center faculty is a small group of friends and family that have worked with each other for the majority of their lives. Our group projects this family comfort on all the students that enroll and come visit. Our students are trained as if they are becoming a part of the company or family and become connected for life.

All of The LEARN Center instructors are licensed New York State Private School Career Teachers. They take pride in teaching and make it a point to create a personal relationship with every student that enrolls. They make themselves available almost 24/7 for the students to reach them with any questions, concerns, or problems. The course catalog has been developed with the help from each and every person on this faculty, along with, friends and family that are closely involved.

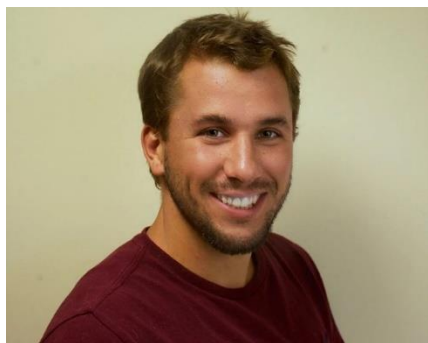


The Owner and Office Administrator is Lyndsay Guidi and makes herself available to every student and prospective student. She runs the company alongside her partners with a kind-hearted attitude and her main goal is to help all students get access to any aid and benefits available to them in addition to ensuring they are being taught in an optimal social environment. Furthermore, she continues to create partnerships with companies to ensure the graduates of The LEARN Center are given all the opportunities to enter the industry as a qualified employee.

The Director and President of The LEARN Center is George Guidi, he is also an owner of the company. He also has over 50 years of experience in the construction industry and has been operating heavy equipment since he was a child. He is also the President and Owner of Mid-Isle Contracting of LI and Mid-Isle Excavating which have been in business for over 50 years. George has a NYS license to teach, has held a crane license for many years, has a license for the installation of commercial, industrial, and residential septic systems. He also has his OSHA 30-hour construction safety and health certification, the OSHA confined space training certificate, the Heartsaver First Aid CPR AED certificate, and is an NCCER certified craft instructor for heavy equipment, construction laborer, and general construction. George teaches in all aspects of the curriculums offered and evaluates all instructors, as well as, evaluates all students for placement and certification.



## Faculty (*Continued*)



Giorgio Guidi is an owner and instructor for The LEARN Center. Giorgio has over 15 years of experience in the construction industry and has been on heavy equipment since he was a child. He has a Bachelor of Engineering in Engineering Science from Stony Brook University and specialized in engineering management. Giorgio has a NYS license to teach, is certified by NCCER as a craft instructor to teach heavy equipment operations, mobile crane operations, core curriculum, construction site safety master, carpentry, construction craft laborer, welding, highway/heavy construction, AWS welding, site layout, rigging, construction site safety supervisor, construction site safety orientation, tower crane operator, ironworking, signal person, weatherization, construction site safety technician, and heavy highway helper. He is also an authorized OSHA outreach training instructor for classes like the OSHA 10 and OSHA 30. Giorgio teaches in all aspects of the curriculums offered and evaluates students for placement and certification.



Christopher Locovare is the Safety Officer for The LEARN Center. Mr. Locovare has been in the Quality Assurance profession for over 40 years for companies like Fairchild and Lockheed Martin with a Bachelor's degree in Mechanical Technology Engineering. Mr. Locovare also presently works as a Director of Quality and Safety for the MTA; has an instructor's certificate for the Department of Defense Mil-Std-2000 soldering instruction, an instructor's certificate for NASA HNB 5300.4(3A-2) soldering instruction, the OSHA 30-hour Construction Safety & Health Certification, and the HAZMAT 40-hour Class Certification under OSHA 29 CFR 1910-120. Chris is an instructor for all the Safety courses and has a critical role in the development of all safety courses and in the educational structure of The LEARN Center.



Anthony Denicola is a NYS licensed teacher for The LEARN Center. He has over 50 years of experience in the construction industry and has been operating heavy equipment since he was a child. Tony teaches all the practical courses offered in this catalog.

# Curriculums Offered

The LEARN Center offers 5 curriculums of study for **Entry-Level** and **Professional Evaluation** including Backhoe Loaders, Bulldozers, Excavators, Payloaders, & Skid-steer Loaders. There are different entrance requirements for the Entry-Level and Professional Evaluation curriculums. All individuals entering The LEARN Center facility (except the office area) must wear work boots/shoes that will be provided by the student. Students will learn in a dirty and dusty construction environment and are to dress accordingly.

We also offer OSHA Outreach Training Programs for construction workers including the OSHA 10-hour and 30-hour course. And since The LEARN Center is an approved New York City Department of Buildings Course Provider we also offer the training required for workers and supervisors in the 5 boroughs. Additionally, we can create custom packages and private lessons to meet the needs of any one individual or business.

## Entry-Level Curriculums

### Entry-Level Entrance Requirements

Entry level students who desire to take courses at The LEARN Center are required to have a HS Diploma or GED or pass an admissions exam for a \$150.00 fee. In addition, individuals must be able to speak and understand basic English, lift 25 pounds, have the level of dexterity and coordination to climb a ladder, and a minimum of 20/40 vision (same as automobile licensure). Students that are taking medications or are under the care of a physician must notify the office prior to registering. ***CREDITS CAN BE GRANTED FOR PREVIOUS EDUCATION IF APPROVED BY THE DIRECTOR.***

**Table 1**

<b>Backhoe Loader</b>	<b>Bulldozer</b>	<b>Excavator</b>	<b>Payloader</b>	<b>Skid-Steer Loader</b>
Module 1 - \$2240.00	Module 1 - \$2240.00	Module 1 - \$2240.00	Module 1 - \$2240.00	Module 1 - \$2240.00
Module 2 - \$2240.00	Module 2 - \$2240.00	Module 2 - \$2240.00	Module 2 - \$2240.00	Module 2 - \$2240.00
Module 3 - \$2240.00	Module 3 - \$2240.00	Module 3 - \$2240.00	Module 3 - \$2240.00	Module 3 - \$2240.00
Module 4 - \$2240.00	Module 4 - \$2240.00	Module 4 - \$2240.00	Module 4 - \$2240.00	Module 4 - \$2240.00

***For the most up-to-date information please check our website***

## Entry-Level General Description

For entry-level students, instruction is offered on how to operate any one of the following machines: Backhoe Loader, Bulldozer, Excavator, Payloader, & Skid-Steer Loader. Each curriculum consists of 4 modules (Table 1) with each module consisting of several classes. There are two kinds of classes at The LEARN Center: practical and comprehensive. The practical classes are the “hands-on” operations that are tailored to the machine of interest.

All practical classes will be conducted in a functioning heavy equipment excavation yard where the student will be immersed into the operation of the machine of choice within a construction setting environment. Some machine exercises are weather dependent (i.e., loading and unloading of machines and materials) and will not be performed in rainy conditions due to safety considerations.

The comprehensive courses are the classroom environment classes that are included in each module and are identified below (Table 2) with a prefix starting with “C”. Worksite Safety Awareness (CS1) is the prerequisite for all entry-level classes offered at The LEARN Center. In addition, each machine module 1 has a tailored safety awareness course (CSK1, CBL1, CEX1, CPL1 and CDZ1) that discusses specific machine operation and safety precautions.

When an entry-level student desires instruction in more than one machine, comprehensive classes are not duplicated. Instead, additional (elective) classes are offered as shown in Table 2.

**Table 2**

Comprehensive Classes	
CS1	Worksite Safety Awareness
CSR	Rigging for Machine and Material Transport
CST	Trenching, Shoring, Benching and Sloping; 811
CSO	OSHA CFR 1926
CSD	Demolition
CSM	Maintenance and Protection of Traffic





# Backhoe Loader Curriculum

Though it is one of the smallest machines on any large construction site, the backhoe is the most versatile machine you can find. If you are looking to break into the industry, start your own construction business, enhance your existing landscaping or small construction business, or you just want to tackle a backyard construction project, the backhoe will fill the bill.



## Module 1

### Introduction to Backhoe Loader

The Introduction to Backhoe module has a 3-day (21 hour) duration made up of the following classes:

- Day 1
  - CS1 Worksite Safety Awareness(if not previously taken) 3 hours Comprehensive
  - CBL1 Backhoe Safety Awareness 1 hour Comprehensive
  - BH1 Backhoe Maintenance & Basic Controls 3 hours Practical
- Day2
  - BH2 Backhoe Stick, Boom & Bucket Control 7 hours Practical
- Day 3
  - BH3 Backhoe Solo Operation w/supervision 7 hours Practical

Students will be introduced to the backhoe, its capabilities and maintenance requirements (fuel, oils, filters, etc.) including prestart inspections and the greasing of the pivot points of the machine. Students will maneuver the machine around the yard, use the front bucket, the stabilizers and the backhoe attachment. This curriculum will focus on the proficiency needed in the use of the aforementioned features through repetitive motions and the movement of various materials.

**Tuition: \$2240.00**

### Backhoe Loader



#### Module 2

Backhoe Loader 2 (Prerequisite: Introduction to Backhoe)

Students will be re-introduced to the backhoe and quizzed on the practical knowledge learned in the introductory course. Basic safety and maintenance will be reinforced. The Backhoe 2 module has a 3 day (21 hour) duration made up of the following classes:

- Day 1
  - SS2 Rigging for Machine and Material Transport for Backhoe 4 hours Comprehensive
  - BH4 Backhoe Instruction 3 hours Practical
- Day 2
  - BH4 Backhoe Instruction 7 hours Practical
- Day 3
  - BH4 Backhoe Instruction 4 hours Practical
  - BH5 Backhoe Solo Operation w/supervision 3 hours Practical

This course will focus on solo operation and more repetitive techniques will be taught. Students will be taught the proper use of slings, chain and wire rope with regard to the lifting of different kinds of materials. More advanced maneuvering techniques and operations will be introduced in accordance with the individual student's ability. One-on-one training will resume ensuring proper safety methods and learning effectiveness. Students will also learn how to safely rig a backhoe to a trailer for transport.

**Tuition: \$2240.00**

## Entry-Level

### Backhoe Loader

#### Module 3



#### Backhoe Loader 3      *(Prerequisite: Backhoe 2)*

Students will be welcomed back with reinforcing the basic maintenance and safety of the backhoe. Each student will be quizzed on the practical information learned in the previous courses of training. The Backhoe 3 module has a 3 day (21 hour) duration made up of the following classes:

- |  |          |               |
|--|----------|---------------|
| • SS3 Trenching, Shoring, Benching and Sloping for Backhoe | 4 hours  | Comprehensive |
| • BH6 Backhoe Instruction                                  | 14 hours | Practical     |
| • BH7 Backhoe Solo Operation w/supervision                 | 3 hours  | Practical     |

The repetition of techniques learned will be heavily leaned upon while learning the proper methods of trenching and shoring. New attachments will be introduced and taught in the same manner as previous courses.

**Tuition: \$2240.00**

## Entry-Level

### Backhoe Loader

#### Module 4



#### Backhoe Loader 4     *(Prerequisite: Backhoe 3)*

Students are expected to initiate the basic maintenance and safety of the backhoe and be able to properly start, move, and run the machine. Each student will be tested on their ability to perform all practical techniques taught in previous courses. The Backhoe 4 module has a 3 day (21 hour) duration made up of the following classes:

- |  |          |               |
|--|----------|---------------|
| • SS4 OSHA regulations 29 CFR 1926 for Backhoe | 4 hours  | Comprehensive |
| • BH8 Backhoe Instruction                      | 14 hours | Practical     |
| • BH9 Backhoe Solo Operation w/supervision     | 3 hours  | Practical     |

This class will progress according to each individual student's strengths and weaknesses. Advanced material handling will be taught using different techniques including rigging. All students will be introduced to blueprint reading, and transit use for excavation purposes.

**Tuition: \$2240.00**



## Bulldozer Curriculum

Though it looks simple, the bulldozer is one of the more difficult machines to master. Extremely powerful and nimble, it easily clears and levels land with its 6 way tilting blade.



### *Module 1*

#### Introduction to Bulldozer

The Introduction to Bulldozer module has a 3 day (21 hour) duration made up of the following classes:

- |  |         |               |
|--|---------|---------------|
| • SS1 Worksite Safety Awareness              | 3 hours | Comprehensive |
| • DS1 Bulldozer Safety Awareness             | 1 hour  | Comprehensive |
| • DZ1 Bulldozer Maintenance & Basic Controls | 3 hours | Practical     |
| • DZ2 Bulldozer Blade Control                | 7 hours | Practical     |
| • DZ3 Bulldozer Solo Operation               | 7 hours | Practical     |

Students will be introduced to the bulldozer, its capabilities and maintenance requirements (fuel, oils, filters, etc.) including the greasing of the pivot points of the machine. Students will maneuver the machine around the yard and use the front blade. This portion of the course will focus on the proficiency needed in the maneuvering and use of the blade through repetitive motions and the movement of materials.

**Tuition: \$2240.00**



## Entry-Level

### Bulldozer

#### Module 2



#### Bulldozer 2    *(Prerequisite: Introduction to Bulldozer)*

Students will be re-introduced to the bulldozer and quizzed on the practical knowledge learned in the introductory course. Basic safety and maintenance will be reinforced. This course will focus on solo operation and more repetitive techniques taught. The Bulldozer 2 module has a 3 day (21 hour) duration made up of the following classes:

- |  |          |               |
|--|----------|---------------|
| • SS2 Rigging for Machine and Material Transport for Bulldozer | 4 hours  | Comprehensive |
| • DZ4 Bulldozer Instruction                                    | 14 hours | Practical     |
| • DZ5 Bulldozer Solo Operation                                 | 3 hours  | Practical     |

One-on-one training will resume ensuring proper safety methods and learning effectiveness. Students will also learn how to safely rig a bulldozer to a trailer for transport.

**Tuition: \$2240.00**

## Entry-Level

### Bulldozer

#### Module 3



#### Bulldozer 3    *(Prerequisite: Bulldozer 2)*

Students will be welcomed back with reinforcing the basic maintenance and safety of the bulldozer. Each student will be quizzed on the practical information learned in the previous courses of training. The Bulldozer 3 module has a 3 day (21 hour) duration made up of the following classes:

- |  |          |               |
|--|----------|---------------|
| • SS3 Trenching, Shoring, Benching and Sloping for Bulldozer | 4 hours  | Comprehensive |
| • DZ6 Bulldozer Instruction                                  | 14 hours | Practical     |
| • DZ7 Bulldozer Solo Operation                               | 3 hours  | Practical     |

The repetition of techniques learned will be heavily leaned upon while learning the proper methods of trenching and shoring. New attachments will be introduced and taught in the same manner as previous courses.

**Tuition: \$2240.00**

## Entry-Level

### Bulldozer

#### Module 4



#### Bulldozer 4    *(Prerequisite: Bulldozer 3)*

Students are expected to initiate the basic maintenance and safety of the bulldozer and be able to properly start, move, and run the machine. Each student will be tested on their ability to perform all techniques taught in previous courses. The Bulldozer 4 module has a 3 day (21 hour) duration made up of the following classes:

- |                                |          |               |
|--------------------------------|----------|---------------|
| • SS4 Demolition for Bulldozer | 4 hours  | Comprehensive |
| • DZ8 Bulldozer Instruction    | 14 hours | Practical     |
| • DZ9 Bulldozer Solo Operation | 3 hours  | Practical     |

This class will progress according to each individual student's strengths and weaknesses. Advanced material handling will be taught using different techniques including rigging. All students will be introduced to blue print reading, and transit use for excavation purposes.

**Tuition: \$2240.00**



## Excavator Curriculum

Need to dig a 16 foot hole or do some deep trenching? There no better machine than an excavator. These machines are used routinely in the heavy construction business for drainage and conduit projects. The ability to rotate 360° makes this the choice machine to use on cramped job sites.



### *Module 1*

#### Introduction to Excavator

Need to dig a 16 foot hole or do some deep trenching? There no better machine than an excavator. These machines are used routinely in the heavy construction business for drainage and conduit projects. The ability to rotate 360° makes this the choice machine to use on cramped job sites. The Introduction to Excavator module has a 3 day (21 hour) duration made up of the following classes:

• SS1 Worksite Safety Awareness	3 hours	Comprehensive
• ES1 Excavator Safety Awareness	1 hour	Comprehensive
• EX1 Excavator Maintenance & Basic Controls	3 hours	Practical
• EX2 Excavator Stick, Boom & Bucket Control	7 hours	Practical
• EX3 Excavator Solo Operation	7 hours	Practical

Students will be introduced to various sized excavators, their capabilities and maintenance requirements (fuel, oils, filters, etc.) including the greasing of the pivot points of the machines. Students will maneuver the machines around the yard and learn how to use the controls. This portion of the course will focus on the proficiency needed in the use of the machines through repetitive motions and the movement of various materials.

**Tuition: \$2240.00**

## Entry-Level

### Excavator

#### Module 2



#### Excavator 2    *(Prerequisite: Introduction to Excavator)*

Students will be re-introduced to the excavator and quizzed on the practical knowledge learned in the introductory course. Basic safety and maintenance will be reinforced. The Excavator 2 module has a 3 day (21 hour) duration made up of the following classes:

- |  |          |               |
|--|----------|---------------|
| • SS2 Rigging for Machine and Material Transport for Excavator | 4 hours  | Comprehensive |
| • EX4 Excavator Instruction                                    | 14 hours | Practical     |
| • EX5 Excavator Solo Operation                                 | 3 hours  | Practical     |

This course will focus on solo operation and more repetitive techniques will be taught. Students will be taught the proper use of slings, chain and wire rope with regard to the lifting of different kinds of materials. More advanced maneuvering techniques and operations will be introduced in accordance with the individual student's ability. One-on-one training will resume ensuring proper safety methods and learning effectiveness. Students will also learn how to safely rig an excavator to a trailer for transport.

**Tuition: \$2240.00**



## Entry-Level

### Excavator

#### Module 3



#### Excavator 3    *(Prerequisite: Excavator 2)*

Students will be welcomed back with reinforcing the basic maintenance and safety of the excavator. Each student will be quizzed on the practical information learned in the previous courses of training. The Excavator 3 module has a 3 day (21 hour) duration made up of the following classes:

- |  |          |               |
|--|----------|---------------|
| • SS3 Trenching, Shoring, Benching and Sloping for Excavator | 4 hours  | Comprehensive |
| • EX6 Excavator Instruction                                  | 14 hours | Practical     |
| • EX7 Excavator Solo Operation                               | 3 hours  | Practical     |

The repetition of techniques learned will be heavily leaned upon while learning the proper methods of trenching and shoring. New attachments will be introduced and taught in the same manner as previous courses.

**Tuition: \$2240.00**

## Entry-Level

### Excavator

#### Module 4



#### Excavator 4    *(Prerequisite: Excavator 3)*

Students are expected to initiate the basic maintenance and safety of the excavator and be able to properly start, move, and run the machine. Each student will be tested on their ability to perform all techniques taught in previous courses. The Excavator 4 module has a 3 day (21 hour) duration made up of the following classes:

- |                                |          |               |
|--------------------------------|----------|---------------|
| • SS4 Demolition for Excavator | 4 hours  | Comprehensive |
| • EX8 Excavator Instruction    | 14 hours | Practical     |
| • EX9 Excavator Solo Operation | 3 hours  | Practical     |

This class will progress according to each individual student's strengths and weaknesses. Advanced material handling will be taught using different techniques including rigging. All students will be introduced to blue print reading, and transit use for excavation purposes.

**Tuition: \$2240.00**

## Entry-Level



### Payloader Curriculum

When a lot of material needs to be moved or loaded onto a dump truck, the front end loader is the machine of choice. Especially on Long Island where snow removal, hurricane clean-up and beach erosion require sand or debris movement, the front end loader can be indispensable.



#### *Module 1*

##### Introduction to Payloader

The Introduction to Front End Loader module has a 3 day (21 hour) duration made up of the following classes:

- |  |         |               |
|--|---------|---------------|
| • SS1 Worksite Safety Awareness              | 3 hours | Comprehensive |
| • PS1 Payloader Safety Awareness             | 1 hour  | Comprehensive |
| • PL1 Payloader Maintenance & Basic Controls | 3 hours | Practical     |
| • PL2 Payloader Stick, Boom & Bucket Control | 7 hours | Practical     |
| • PL3 Payloader Solo Operation w/supervision | 7 hours | Practical     |

Students will be introduced to the payloader, its capabilities and maintenance requirements (fuel, oils, filters, etc.) including the greasing of the pivot points of the machine. Students will maneuver the machine around the yard and learn how to use the controls. This portion of the course will focus on the proficiency needed in the use of the machine through repetitive motions and the movement of various materials.

**Tuition: \$2240.00**

## **Entry-Level**

### **Payloader**

#### *Module 2*



#### Payloader 2    *(Prerequisite: Introduction to Front End Loader)*

Students will be re-introduced to the payloader and quizzed on the practical knowledge learned in the introductory course. Basic safety and maintenance will be reinforced. This course will focus on solo operation and more repetitive techniques will be taught. The Payloader 2 module has a 3 day (21 hour) duration made up of the following classes:

- |  |          |               |
|--|----------|---------------|
| • SS2 Rigging for Machine and Material Transport<br>for Front End Loader | 4 hours  | Comprehensive |
| • PL4 Payloader Instruction  | 14 hours | Practical     |
| • PL5 Payloader Solo Operation w/supervision                             | 3 hours  | Practical     |

Students will be taught the proper use of slings, chain and wire rope with regard to the lifting of different kinds of materials. More advanced maneuvering techniques and operations will be introduced in accordance with the individual student's ability. One-on-one training will resume ensuring proper safety methods and learning effectiveness. Students will also learn how to safely rig a payload to a trailer for transport.

**Tuition: \$2240.00**

## Entry-Level

### Payloader

#### Module 3



#### Payloader 3     *(Prerequisite: Payloader 2)*

Students will be welcomed back with reinforcing the basic maintenance and safety of the payloader. Each student will be quizzed on the practical information learned in the previous courses of training. The Payloader 3 module has a 3 day (21 hour) duration made up of the following classes:

- |   |          |               |
|---|----------|---------------|
| • SS3 Trenching, Shoring, Benching and Sloping<br>for Payloader | 4 hours  | Comprehensive |
| • PL6 Payloader Instruction                                     | 14 hours | Practical     |
| • PL7 Payloader Solo Operation w/supervision                    | 3 hours  | Practical     |

The repetition of techniques learned will be heavily leaned upon while learning the proper methods of trenching and shoring. New attachments will be introduced and taught in the same manner as previous courses.

**Tuition: \$2240.00**



## Entry-Level

### Payloader

#### Module 4



#### Payloader 4    *(Prerequisite: Payloader 3)*

Students are expected to initiate the basic maintenance and safety of the payloader and be able to properly start, move, and run the machine. Each student will be tested on their ability to perform all techniques taught in previous courses.

The Payloader 4 module has a 3 day (21 hour) duration made up of the following classes:

- |  |          |               |
|--|----------|---------------|
| • SS4 Demolition for Payloader               | 4 hours  | Comprehensive |
| • PL8 Payloader Instruction                  | 14 hours | Practical     |
| • PL9 Payloader Solo Operation w/supervision | 3 hours  | Practical     |

This class will progress according to each individual student's strengths and weaknesses. Advanced material handling will be taught using different techniques including rigging. All students will be introduced to blue print reading, and transit use for excavation purposes.

**Tuition: \$2240.00**

## Entry-Level



### Skid-Steer Curriculum

The skid-steer is a very unique machine: the wheels have no steering mechanism. Since the left side wheels can be driven independently from the right side wheels, differences in wheel speed will steer the machine as required. Due to this feature, the skid-steer is capable of 360° (zero-radius) turning which makes them extremely maneuverable and indispensable on compact job sites.



#### *Module 1* Introduction to Skid-Steer

The Introduction to the skid-steer module has a 3 day (21 hour) duration made up of the following classes:

- |   |         |               |
|---|---------|---------------|
| • SS1 Worksite Safety Awareness               | 3 hours | Comprehensive |
| • SK1 Skid-Steer Safety Awareness             | 1 hour  | Comprehensive |
| • AA1 Skid-Steer Maintenance & Basic Controls | 3 hours | Practical     |
| • AA2 Skid-Steer Bucket Control               | 7 hours | Practical     |
| • AA3 Skid-Steer Solo Operation               | 7 hours | Practical     |

Students will be introduced to the skid-steer with the objective of safe solo operation on the final day. They will learn to identify the main components of the equipment, proper maintenance requirements, and basic transportation/operations. This course focuses on repetitive motions in order to achieve proficiency through muscle memory. Each student will have one-on-one training to ensure proper safety methods and learning effectiveness.

**Tuition: \$2240.00**

## Entry-Level

### Skid-Steer

#### Module 2



#### Skid-Steer 2    *(Prerequisite: Introduction to Skid-Steer)*

Students will be re-introduced to the skid-steer and quizzed on the practical knowledge learned in the introductory course. Basic safety and maintenance will be reinforced. The Skid-Steer 2 module has a 3 day (21 hour) duration made up of the following classes:

- |   |          |               |
|---|----------|---------------|
| • SS2 Rigging for Machine and Material Transport for Skid-Steer | 4 hours  | Comprehensive |
| • AA4 Skid-Steer Instruction                                    | 14 hours | Practical     |
| • AA5 Skid-Steer Solo Operation                                 | 3 hours  | Practical     |

This course will focus on solo operation and more repetitive techniques will be taught. Students will be taught the proper use of slings, chain and wire rope with regard to the lifting of different kinds of materials. More advanced maneuvering techniques and operations will be introduced in accordance with the individual student's ability. One-on-one training will resume ensuring proper safety methods and learning effectiveness. Students will also learn how to safely rig a skid-steer to a trailer for transport.

**Tuition: \$2240.00**

## Entry-Level

### Skid-Steer

#### Module 3



#### Skid-Steer 3    *(Prerequisite: Skid-Steer 2)*

Students will be welcomed back with reinforcing the basic maintenance and safety of the skid-steer. Each student will be quizzed on the practical information learned in the previous courses of training. The Skid-Steer 3 module has a 3 day (21 hour) duration made up of the following classes:

- |   |          |               |
|---|----------|---------------|
| • SS3 Trenching, Shoring, Benching and Sloping for Skid-Steer | 4 hours  | Comprehensive |
| • AA6 Skid-Steer Instruction                                  | 14 hours | Practical     |
| • AA7 Skid-Steer Solo Operation                               | 3 hours  | Practical     |

The repetition of techniques learned will be reinforced while learning the proper methods of trenching and shoring. New attachments will be introduced and taught in the same manner as previous courses.

**Tuition: \$2240.00**

## Entry-Level

### Skid-Steer

#### Module 4



#### Skid-Steer 4    *(Prerequisite: Skid-Steer 3)*

Students are expected to initiate the basic maintenance and safety of the skid-steer and be able to properly start, move, and run the machine. Each student will be tested on their ability to perform all practical techniques taught in previous courses. The skid-steer 4 module has a 3 day (21 hour) duration made up of the following classes:

- |                                 |          |               |
|---------------------------------|----------|---------------|
| • SS4 Demolition for Skid-Steer | 4 hours  | Comprehensive |
| • AA8 Skid-Steer Instruction    | 14 hours | Practical     |
| • AA9 Skid-Steer Solo Operation | 3 hours  | Practical     |

This class will progress according to each individual student's strengths and weaknesses. Advanced material handling will be taught using different techniques including rigging. All students will be introduced to blue print reading, and transit use for excavation purposes.

**Tuition: \$2240.00**



# Professional Evaluation Curriculum

This curriculum is designed for professional heavy equipment machine operators who display a minimum of 5 years of experience operating the machine of choice. Each machine evaluation lasts for 1 day and consists of a 4-hour safety course (XS1) that is an abbreviated compilation of safety courses SS1, SS2, SS3 and SS4. The next 3 hours of the day is dedicated to the evaluation of the operator's skillset as a safe and proficient operator of the machine. Matriculation to any one of these courses is no guarantee of graduation. Included in the 4-hour safety course is time allotted for a written test. A minimum score of 80% is required to move on to the practical portion of the evaluation. Then, the operator will operate one of our machines and be graded on their proficiency in the skills identified for the course selected. A minimum score of 80% from the practical portion of the course is required to graduate.

## Backhoe Evaluation

**Tuition: \$1550.00**



- XS1 Safety – includes written safety exam
- XB1 Backhoe Evaluation

Analysis of the operator's capabilities includes:

- the proficient use of all controls on command
- maneuvering the machine fluidly when traveling
- raising and lowering the front bucket
- raising and lowering the boom
- raising and lowering the arm
- curling and dumping the bucket
- dig a trench
- backfill a trench
- pick up a load
- dump a load
- back-blade for rough grade
- load a machine onto a trailer
- correctly secure the machine to the trailer
- proper mounting and dismounting of equipment
- proper start-up and shut-down of machine

# Bulldozer Evaluation

**Tuition: \$1550.00**



- XS1 Safety – includes written safety exam
- XD1 Bulldozer Evaluation

Analysis of the operator's capabilities includes:

- the proficient use of all controls on command
- maneuvering the machine fluidly forward left and right
- maneuvering the machine fluidly backward left and right
- raising and lowering the blade
- cutting material
- forward grading
- climbing a slope while cutting a grade
- load a machine onto a trailer
- correctly secure the machine to the trailer
- proper mounting and dismounting of equipment
- proper start-up and shut-down of machine

# Excavator Evaluation

**Tuition: \$1550.00**



- XS1 Safety – includes written safety exam
- XE1 Excavator Evaluation

Analysis of the operator's capabilities includes:

- the proficient use of all controls on command
- maneuvering the machine fluidly when traveling
- raising and lowering the boom
- raising and lowering the stick
- curling and dumping the bucket
- spinning the cab
- dig a trench
- backfill a trench
- pick up a load
- dump a load
- load a machine onto a trailer
- correctly secure the machine to the trailer
- proper mounting and dismounting of equipment
- proper start-up and shut-down of machine

# Payloader Evaluation

**Tuition: \$1550.00**



- XS1 Safety – includes written safety exam
- XF1 Front-End Loader Evaluation

Analysis of the operator's capabilities includes:

- the proficient use of all controls on command
- maneuvering the machine fluidly when traveling
- raising and lowering the bucket
- back-blading for rough grade
- pick up a load
- dump a load
- load a machine onto a trailer
- correctly secure the machine to the trailer
- proper mounting and dismounting of equipment
- proper start-up and shut-down of machine

# Skid-Steer Evaluation

**Tuition: \$1550.00**



- XS1 Safety – includes written safety exam
- XA1 Skid-Steer Evaluation

Analysis of the operator's capabilities includes:

- the proficient use of all controls on command
- maneuvering the machine fluidly forward left and right
- maneuvering the machine fluidly backward left and right
- raising and lowering the bucket
- 360° spin
- Back-blading for rough grade
- climbing a slope while pushing material
- picking up a load
- dumping a load
- load a machine onto a trailer
- correctly secure the machine to the trailer
- proper mounting and dismounting of equipment
- proper start-up and shut-down of machine